

ARTSPACE

100 Proof

August 11–September 30, 2017



Terry Allen

American, born 1943

Cursor, 2002

lithograph with brand mark on paper

Gift of Landfall Press, Collection of Kansas City Art Institute



Terry Allen

American, born 1943

Bottom of the World, 2013

portfolio of 11 lithographs with album and CD

Gift of Landfall Press, Collection of Kansas City Art Institute



Ghada Amer and Reza Farkhondeh

Ghada Amer, born Egypt, 1963, based in New York City, NY

Reza Farkhondeh, born Iran, 1963, based in New York City, NY

Love Me, 2006

lithograph with hand sewn elements

Gift of Landfall Press, Collection of Kansas City Art Institute



Ghada Amer and Reza Farkhondeh

Ghada Amer, born Egypt, 1963, based in New York City, NY

Reza Farkhondeh, born Iran, 1963, based in New York City, NY

For Wonder Woman, 2005-06

lithograph with hand sewn elements

Gift of Landfall Press, Collection of Kansas City Art Institute



Christo

American, born Bulgaria, 1935

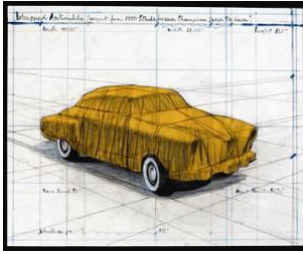
Wrapped Champagne Bottle, (*Project for Happy Anniversary*), 2001

lithograph with collage

Gift of Landfall Press, Collection of Kansas City Art Institute

Christo

ARTSPACE



American, born Bulgaria, 1935

Wrapped Automobile, (Project for 1950 Studebaker Champion, Series 9G Coupe), 2015
lithograph with collage

Gift of Landfall Press, Collection of Kansas City Art Institute



Robert Cottingham

American, born 1935

Roxy, 2001

lithograph

Gift of Landfall Press, Collection of Kansas City Art Institute



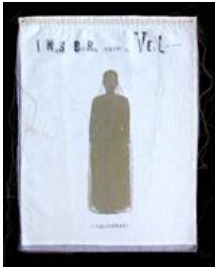
Lesley Dill

American, born 1950

Rapture's Germination, 2010

lithograph

Gift of Landfall Press, Collection of Kansas City Art Institute



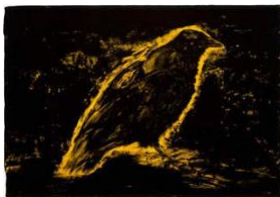
Lesley Dill

American, born 1950

I See Visions, 2004

lithograph on muslin and silk organza with hand-sewing

Gift of Landfall Press, Collection of Kansas City Art Institute



Jim Dine

American, born 1935

Sun's Night Glow, 2000

lithograph

Gift of Landfall Press, Collection of Kansas City Art Institute

ARTSPACE



Peter Doig

Scottish, born 1959, based in Trinidad

Untitled, 2006

lithograph

Gift of Landfall Press, Collection of Kansas City Art Institute



James Drake

American, born 1946

Whispers, 2015

suite of 7 lithographs

Gift of Landfall Press, Collection of Kansas City Art Institute



James Drake

American, born 1946

Feast of Four Rivers, 2016

lithographs

On loan from Landfall Press



James Drake

American, born 1946

A Thousand Tongues Burn and Sing, 2000

lithograph

Gift of Landfall Press, Collection of Kansas City Art Institute



Vernon Fisher

American, born 1943

End, 2000

lithograph

Gift of Landfall Press, Collection of Kansas City Art Institute

Peregrine Honig

American, born 1976

ARTSPACE



Pyre, 2016

suite of lithographs and wire hangers

Gift of Landfall Press, Collection of Kansas City Art Institute



David Levinthal

American, born 1948

Uncle Tom's Cabin, 1999

suite of 8 photogravures

Gift of Landfall Press, Collection of Kansas City Art Institute



Sol Lewitt

American, 1928-2007

Parallel Curves, 2001

lithograph and aquatint

Gift of Landfall Press, Collection of Kansas City Art Institute



Claes Oldenburg

American, born Sweden, 1929

Balloons, 2000

lithograph

Gift of Landfall Press, Collection of Kansas City Art Institute



Ed Paschke

American, 1939-2004

Citroid, 2000

lithograph

Gift of Landfall Press, Collection of Kansas City Art Institute

Jeanette Pasin Sloan

American, born 1946

ARTSPACE



Alignment, 2000

lithograph

Gift of Landfall Press, Collection of Kansas City Art Institute



Philip Pearlstein

American, born 1924

Model in Kimono on Plastic Chair, 2000

lithograph

Gift of Landfall Press, Collection of Kansas City Art Institute



Nursa Latif Qureshi

Pakistani, born 1973, lives and works in Melbourne, Australia

Gardens of Desire, 2003

lithograph

Gift of Landfall Press, Collection of Kansas City Art Institute



Nusra Latif Qureshi

Pakistani, born 1973, lives and works in Melbourne, Australia

Three Songs of Devotion, 2003

lithograph

Gift of Landfall Press, Collection of Kansas City Art Institute



Allen Ruppertsberg

American, born 1944

The Top 10 Historical Similarities (and Differences) Between Prints and Photography, 2012

suite of 10 lithographs

Gift of Landfall Press, Collection of Kansas City Art Institute

Hans Schabus

Austrian, born 1970

Mobile Home, 2007

ARTSPACE



lithograph

Gift of Landfall Press, Collection of Kansas City Art Institute

Kara Walker

American, born 1979

African-American, 1998

linocut

Gift of Landfall Press, Collection of Kansas City Art Institute



H.C. Westermann

American, 1922 - 1981

Untitled, 1972 image / 2000 print

lithograph

Gift of Landfall Press, Collection of Kansas City Art Institute



William T. Wiley

American, born 1937

Band Together, 2002

lithograph

Gift of Landfall Press, Collection of Kansas City Art Institute



100 Proof

August 11–September 30, 2017

H&R Block Artspace at the Kansas City Art Institute

16 East 43rd Street, Kansas City, Missouri 64111

www.kcai.edu/artspace